

Ministry of Endowments & Islamic Affairs

Doha, Qatar

A Qatari government agency

The lightweight machine for structural limitations.

Architecture: SE&M Consultants

The Ministry of Awqaf and Islamic Affairs (AWQAFM) is a Qatari government agency also known as the Ministry of Endowments and Islamic Affairs.

Scope

The building had some structural limitations from the early design stage, for that reason the weight of the BMU on the top floor had to be limited by shortening the outreach of the machine.

Strategy

FBA Gomyl engineers worked closely with the structural engineers of the building to find out the limits of weight and then to work out a solution by installing a SafeAccess monorail on the sloped part of the building. For the recessed areas, a fixed pantograph of 2m reach has been designed. The BMU is equipped with a knuckle boom to reach all facades of the building.



The ministry building in West Bay Doha's district.

BMU Type FBA S

A machine with knuckle boom and pantograph cradles

FBA PC Powered cradles sets

1 set for SafeAccess monorail

Davit system

Made in Aluminium

Cable lifeline type SecuRope

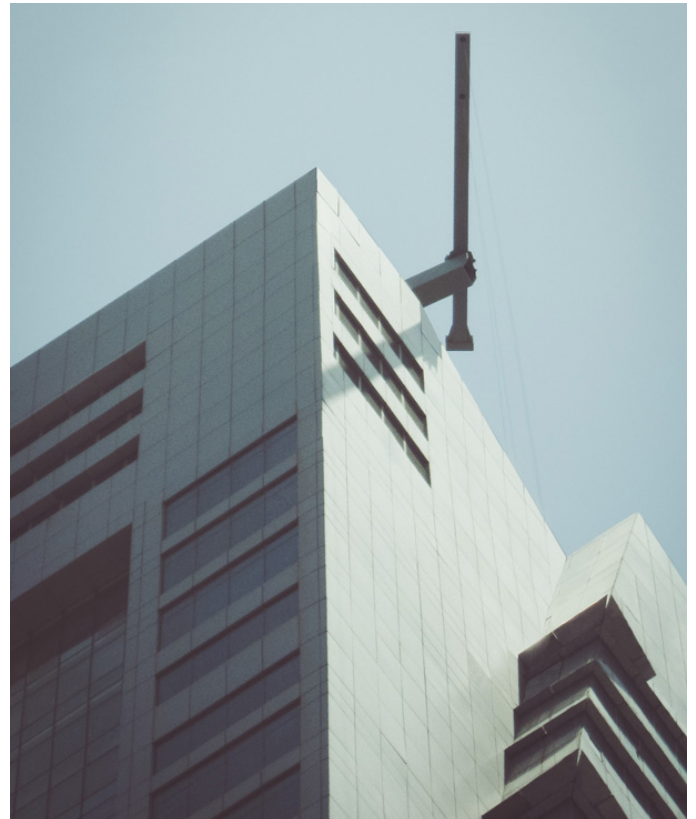
Approximately 60m

Safe access equipment type SafeAccess

Approximately 100m of reinforced monorail with motorised trolleys

Anchor points

50 pieces distributed over several floors



BMU Type FBA S: a machine with a long jib.



Cradle with 2 meter pantograph.